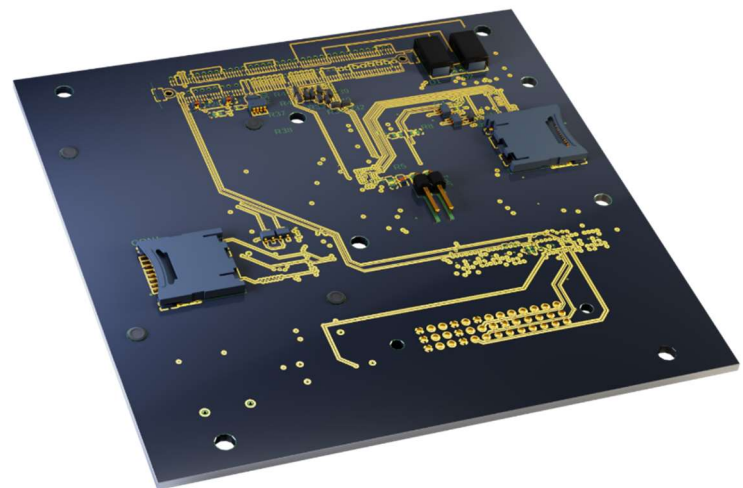
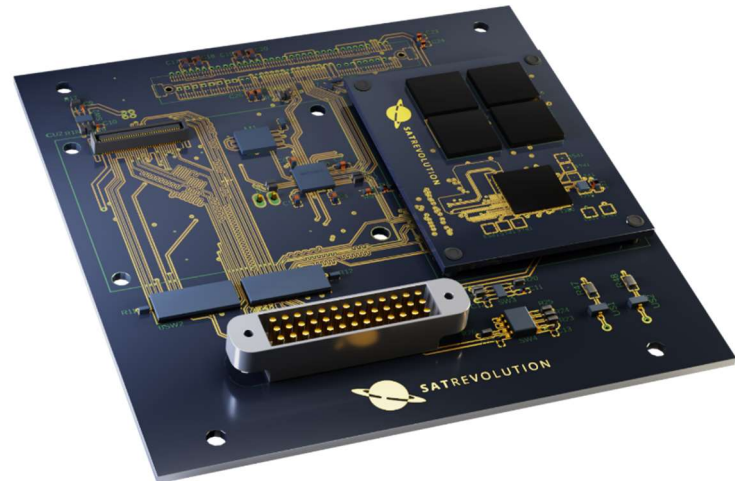


Advance On-Board Computer

(OBC+ACU)

Description	<p>Advanced version of On-Board Computer. Cubesat subsystem for payload control and communication with high computing power</p> <p>It consists:</p> <ul style="list-style-type: none"> · 1x Motherboard · 2x Computing Unit with external MRAM memory
Features	<p>Motherboard:</p> <ul style="list-style-type: none"> · Main processor: MSP430, 8-16MHz, 256KB FRAM, Ultra Low-Power Modes · Inner module communications (IMC) · Connectors for max 2x CU · Switching bus providing redundancy · μSD card connected to CU <p>Computing Unit:</p> <ul style="list-style-type: none"> · Processor: Up to 216MHz, MPU, DSP instructions, Three low-power modes · Available interfaces: 1x DCMI, 1x SDMMC, 1x USB, 2x SPI, 2x UART, 9x ADC, 2x I2C, MCO · MRAM memory: 4x 2MB capacity, SRAM compatible timing, Non-volatile for more than 20 years
Details	<p>Motherboard:</p> <ul style="list-style-type: none"> · Current consumption: 120 μA/MHz (processor) + up to 300 mA (CU) + other components for payload control · Power switches on 3.3 V and 12 V · Connector FX10A-168 <p>Computing Unit:</p> <ul style="list-style-type: none"> · Current consumption: up to 300 mA · Connector HIROSE DF40HC(3.0)-70DS-0.4V
Properties	<ul style="list-style-type: none"> · Total mass: 52 g · Size: 96 x 96 x 8 mm · Compatible with PC-104 mechanical interface
Tests	<ul style="list-style-type: none"> · Thermal-vacuum · Random vibration · EMC


SATREOLUTION S.A.

NIP: 8943081944
REGON: 364960301

ADRES:

ul. Stabłowicka 147
54-066 Wrocław

KONTAKT:

T: +48 533 325 851
E: contact@satrevolution.com