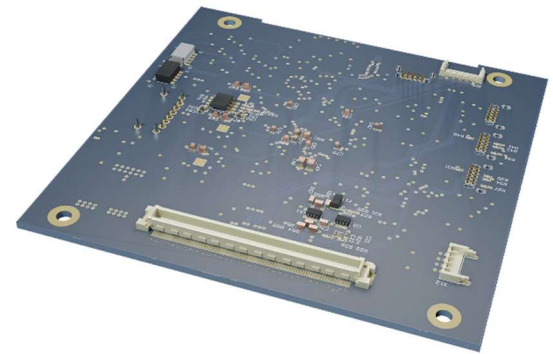
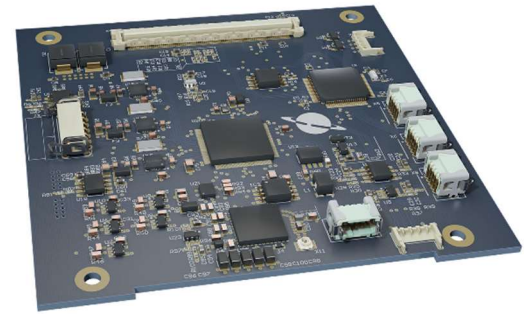


# Command and Data Handling Module (OBC+ADCS)

<b>Description</b>	Base version of Command and Data Handling Module which is On-Board Computer with Attitude Determination and Control unit. This CubeSat subsystem is perfect for payload command, data handling, attitude determination and control, communication and external MRAM memory. Ideal for scientific experiments satellites.
<b>On-board Computer data</b>	<ul style="list-style-type: none"> <li>• Main processor: up to 16MHz, 256kB FRAM, Ultra Low Power Modes</li> <li>• Storage memory: 8MB</li> <li>• Payload power switches: 3.3V and Battery Voltage with adjustable current limit</li> <li>• Possible payload interfaces: 2xI2C, 4xSPI, 3xUART</li> <li>• Regulated 12V power supply</li> </ul>
<b>Attitude Determination and Control data</b>	<ul style="list-style-type: none"> <li>• Processor: up to 100MHz</li> <li>• Storage memory: 8MB</li> <li>• Actuators: 3x Electromagnetic Coils, 3x Reaction Wheels</li> <li>• Internal Measurement Unit (IMU): Gyroscope, Magnetometr, GPS Position 2.5m CEP, Velocity 0,1m/sec, Max 50Hz rate</li> <li>• SGP4/SGD4, IGRF12, B-DOT, EKF, GS tracking algorithms available.</li> </ul>
<b>Properties</b>	<ul style="list-style-type: none"> <li>• Total mass: 37 g</li> <li>• Size: 96 x 96 x 5 mm<sup>3</sup></li> <li>• Compatible with PC-104 mechanical interface</li> </ul>
<b>Tests</b>	<ul style="list-style-type: none"> <li>• Thermal-vacuum Test</li> <li>• Random Vibration Test</li> <li>• EMC/EMI Test</li> </ul>



**SATREvolution S.A.**

NIP: 8943081944  
REGON: 364960301

**ADRES:**

ul. Stabłowicka 147  
54-066 Wrocław

**KONTAKT:**

T: +48 533 325 851  
E: [contact@satrevolution.com](mailto:contact@satrevolution.com)