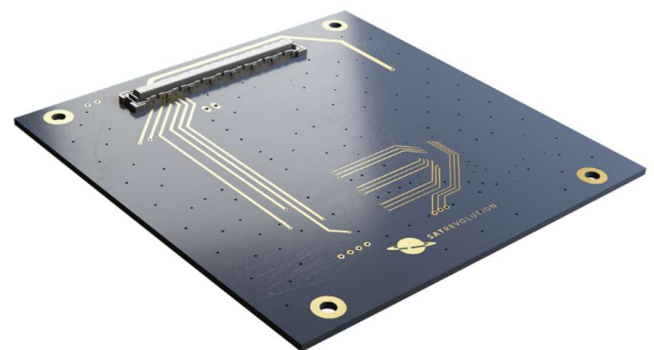
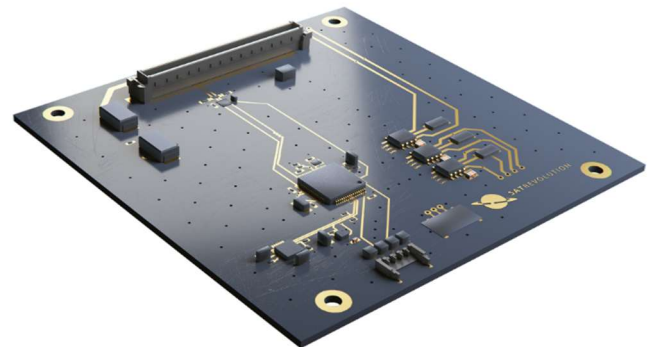


Attitude Determination and Control System

Description	<p>Attitude Determination Control System – responsible for satellite’s on-orbit steering.</p> <p>Based on:</p> <ul style="list-style-type: none"> • 2x 3 axis Gyroscope • 2x 3 axis Accelerometer • 2x 3 axis Magnetometer • 3x Magnetorquers • 2D fine sun sensor
Features	<ul style="list-style-type: none"> • Orientation accuracy: ~2deg • Max power: 0.9 W • Power supply: 3.3 V, 12V • High power computation unit (ARM Cortex M4 @ 100MHz) • SGP4 / SGD4 propagator implemented • IGRF 12 geomagnetic model implemented • RTC on board available • Quaternion or Euler angles attitude representation
Details	<ul style="list-style-type: none"> • Orientation accuracy: ~2deg • Max power: 0.9 W • Power supply: 3.3 V, 12V <p>Magnetorquers:</p> <ul style="list-style-type: none"> • 3-axis control • Current consumption: 0.0 – 0.5A per axis • Manual control possible
Properties	<ul style="list-style-type: none"> • Mass: 50 g • Size: 96 x 96 x 1.6 mm³ • Compatible with PC-104 mechanical interface
Tests	<ul style="list-style-type: none"> • Thermal-vacuum • Random vibration • EMC



SATREVOLUTION S.A.

NIP: 8943081944
REGON: 364960301

ADRES:

ul. Stabłowicka 147
54-066 Wrocław

KONTAKT:

T: +48 533 325 851
E: contact@satrevolution.com